

# MailMarshal™ Exchange

Delivers a powerful, feature-rich internal email filtering solution for Exchange

MailMarshal™ Exchange is a fast, easy-to-use email filtering solution that monitors and controls internal email communication for organizations deploying Microsoft® Exchange 2003/2000. This helps to ensure a safe and productive working environment by enforcing organizational Acceptable Use Policies (AUP) and protecting against spam and viruses.

## Solutions for Today

Internal email accounts for most network traffic and MailMarshal for Exchange provide a checkpoint for monitoring this activity. If unchecked, traffic for virus hoaxes, jokes and chain letters can compromise network resources, and confidential data, inappropriate language and harassing messages can expose a company to potential legal claims.

MailMarshal Exchange is a powerful solution that enables organizations to see an increase in workplace productivity, better protect corporate assets and reduce the potential for corporate liability.

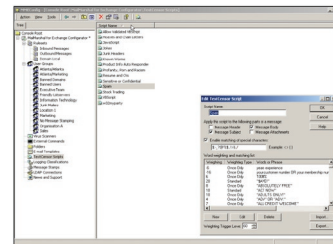
## Key Benefits

**Offers comprehensive content security** - Protects against internal email threats by using such powerful tools as the SpamCensor spam detection engine and the TextCensor lexical analysis engine. In addition, MailMarshal Exchange helps your organization provide better enforcement of security policies by managing, monitoring and reporting on all aspects of your email AUP.

**Supplies seamless management capabilities** – Allows you to install and configure MailMarshal Exchange with minimal administrative training. In addition, its comprehensive reporting capabilities enable you to generate reports on email activity and security events by user or group. This provides a detailed window for management into email utilization and policy compliance.

**Delivers a rapid return on investment** - Reduces network downtime and slow-downs typically caused by virus infections or non-business bandwidth consumption. Protects company assets and your corporate reputation by preventing data loss.

**Provides flexible virus protection** - Integrates with leading third-party anti-virus providers to offer you the most flexible and comprehensive protection in the industry. Not only does MailMarshal Exchange quarantine and clean viruses, it also blocks potentially harmful attachments and identifies common virus characteristics to supplement traditional anti-virus pattern scanning methods.



The MailMarshal Configurator is used to set up and manage the software. TextCensor scripts are easy to create and modify according to your company's email AUP. User groups and email templates are also accessed through the MailMarshal Configurator.

**MARSHAL™**  
Secure. Protect. Comply.

## Delivers a powerful, feature-rich internal email filtering solution for Exchange

### Technical Features

- TextCensor scripts provide lexical and weighted content scanning
- SpamCensor spam detection engine
- High-speed anti-virus scanner support
- Enhanced file type blocking by code structure
- Real-time notification of policy breaches
- Automated responses for common email requests
- Support for end-user quarantined message release
- Message stamping and inserted legal disclaimers as message headers or footers
- Support for different policies with different user groups, while allowing exceptions

- Unpacking and scanning of attachments, including recursive archive unpacking
- Comprehensive usage reports
- Rule set Wizards and pre-configured rule sets
- Bandwidth calculation, message parking and delayed delivery
- Active Directory® and LDAP support synchronizes users and groups with Exchange server and others

### System Requirements

#### Hardware

Minimum requirements to run an Exchange 2003/2000 environment with MailMarshal for Exchange:

- 500 Users: Pentium - III class processor, 500 MHz CPU, 256MB RAM, 10GB HD
- 1000 Users: Dual Pentium III 700, 70GB HD, 1024MB RAM

### Software

- Windows 2003/2000 Server with Active Directory
- Microsoft Exchange 2003/2000 with SP2
- Microsoft Management Console (MMC) 1.2
- Microsoft Data Access Components (MDAC) 2.5
- Internet Explorer 5.01
- Microsoft SQL Server 7.0/2000 for reporting (MSDE, a free runtime version of SQL Server, can be used for smaller sites)



Americas  
Marshal, Inc.  
5909 Peachtree-Dunwoody Rd  
Suite 770  
Atlanta  
GA 30328  
USA

Phone: +1 404-564-5800  
Fax: +1 404-564-5801

Email: [americas.sales@marshal.com](mailto:americas.sales@marshal.com)

Marshal's Worldwide and EMEA HQ  
Marshal Limited,  
Renaissance 2200,  
Basing View,  
Basingstoke,  
Hampshire RG21 4EQ  
United Kingdom

Phone: +44 (0) 1256 848080  
Fax: +44 (0) 1256 848060

Email: [emea.sales@marshal.com](mailto:emea.sales@marshal.com)  
[info@marshal.com](mailto:info@marshal.com) | [www.marshal.com](http://www.marshal.com)

Asia-Pacific  
Marshal Software (NZ) Ltd  
Suite 1, Level 1, Building C  
Millennium Centre  
600 Great South Road  
Greenlane, Auckland  
New Zealand

Phone: +64 9 984 5700  
Fax: +64 9 984 5720

Email: [apac.sales@marshal.com](mailto:apac.sales@marshal.com)